

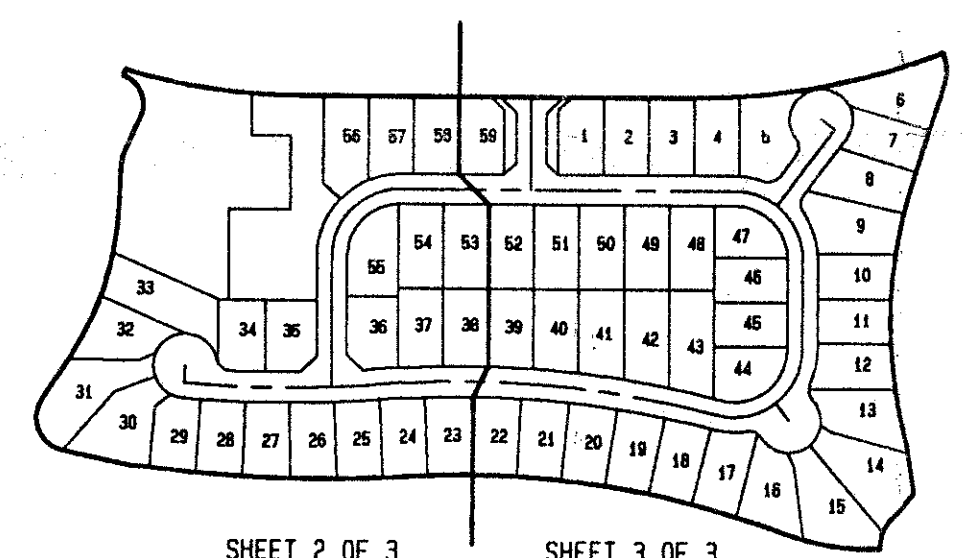
STATE OF FLORIDA
COUNTY OF PALM BEACH
THIS PLAT WAS FILED FOR
RECORD _____ DAY OF
AUGUST, 1995 AND DULY RECORDED
IN PLAT BOOK _____ ON PAGES
_____ AND _____
BY: DOROTHY H. WILKEN, CLERK
D. C.

CIRCUIT COURT SEAL

0587-011

WINSTON TRAILS PARCEL FIVE

PART OF WINSTON TRAILS P. U. D.
SITUATE IN SECTIONS 2 & 3, TOWNSHIP 45
SOUTH, RANGE 42 EAST
PALM BEACH COUNTY, FLORIDA
AUGUST, 1994 SHEET 3 OF 3



SHEET INDEX

PET. 87-112C
ALOC. #0001
5/2/2/I

LEGEND

- F. P. L. FLORIDA POWER & LIGHT
- U. E. UTILITY EASEMENT
- D. E. DRAINAGE EASEMENT
- R/W RIGHT-OF-WAY
- P. B. PLAT BOOK
- O. R. B. OFFICIAL RECORD BOOK
- P.G. PAGE
- MAINT. EASE. MAINTENANCE EASEMENT
- L. W. D. LAKE WORTH DRAINAGE DISTRICT
- (N. R.) NON-RADIAL LINE
- P. O. B. POINT OF BEGINNING
- P. O. C. POINT OF COMMENCEMENT
- P. U. D. PLANNED UNIT DEVELOPMENT
- Δ DELTA ANGULAR VALUE
- R RADIUS LENGTH
- A ARC LENGTH
- PERMANENT CONTROL POINT
(P. C. P.) P. L. S. NO. 4763
- PERMANENT REFERENCE MONUMENT FOUND
PERMANENT REFERENCE MONUMENT SET
(P. R. M.) P. L. S. NO. 4763

ALL DISTANCES ARE GROUND.
SCALE FACTOR = 1.000277

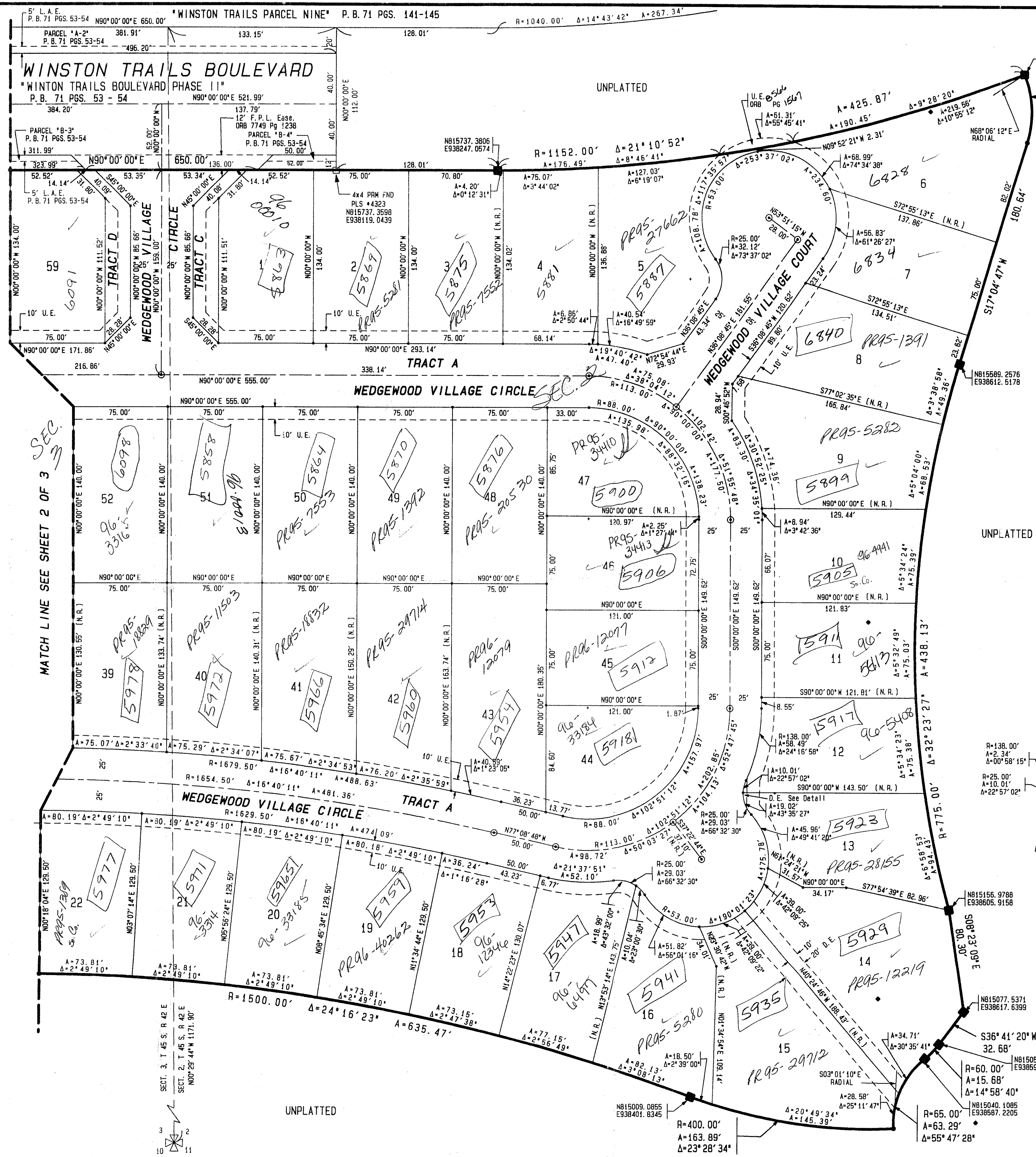
THIS INSTRUMENT WAS PREPARED BY MARY HANNA CLOFFELTER, P. L. S., IN THE
OFFICES OF MOCK, ROOS & ASSOCIATES, INC., 5720 CORPORATE WAY, WEST PALM
BEACH, FLORIDA 33407.

0587-011 75/142

MOCK, ROOS & ASSOCIATES, INC.
5720 CORPORATE WAY, WEST PALM BEACH, FL 33407 (407) 693-3113

SCALE: 1" = 40'
DATE: AUGUST, 1994
P. A. NO. 94117.00
DWG. NO. 45-42-2-4

WINSTON TRAILS PARCEL FIVE
PART OF WINSTON TRAILS, P. U. D.
SECT. 2 & 3, TOWNSHIP 45 SOUTH, RANGE 42 EAST



MATCH LINE SEE SHEET 2 OF 3 SEC. 3

SUBDIVISION Winston Trails, Parcel 5
BOOK 75 PAGE 142
FLOOD MAP # 170A
QUAD # 49.34 ZONING RS
SE 87-112 ZIP CODE 33402
PUD NAME Same as 145412

TAZ-437

CADD FILE
WINT WINTP03

